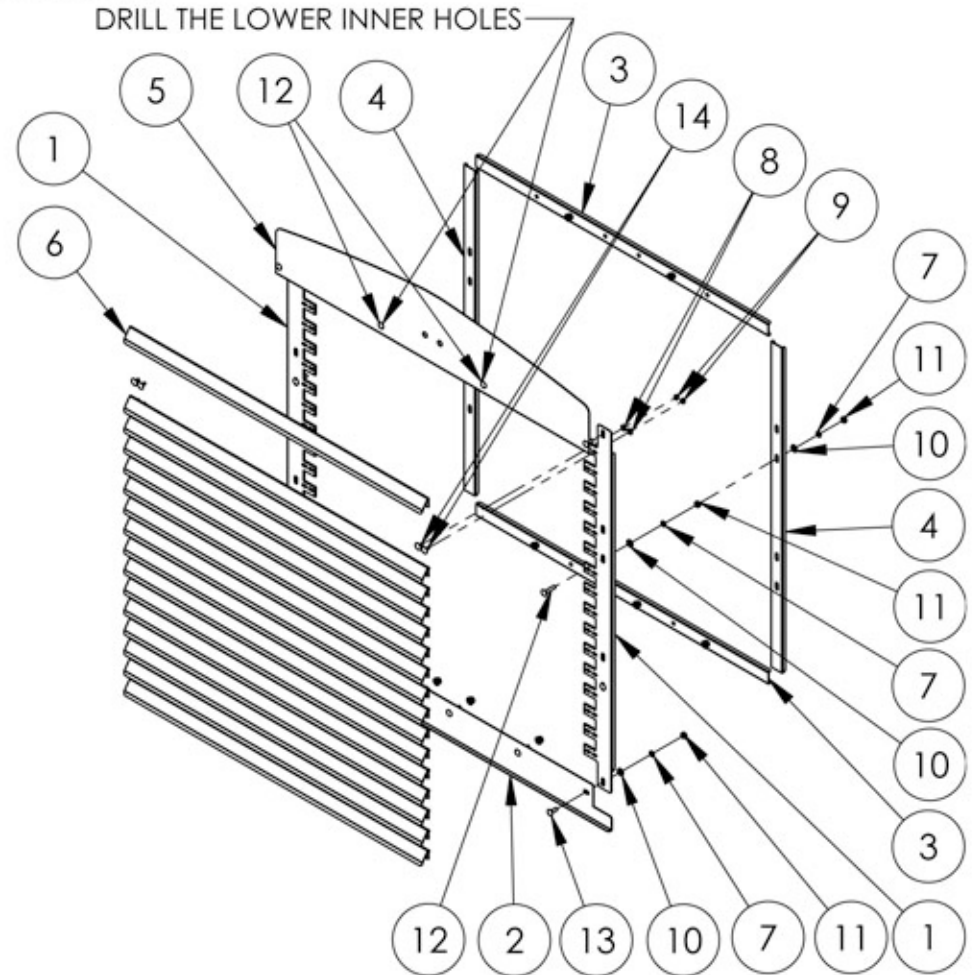


**PLEASE READ THE INSTRUCTIONS COMPLETELY BEFORE INSTALLING**

**INSTALLATION INSTRUCTIONS**

- A** ARRANGE THE LOUVER BARS AND SURROUND PIECES ON A FLAT SURFACE. THE PART NUMBERS FOR THE SURROUND ARE ETCHED ON THE PARTS AND SHOULD BE ARRANGED AS FOLLOWS: CL7223020-U04 IS DRIVER AND PASSENGER SIDE, CL7223020-U05 IS THE BOTTOM, CL7223020-U06 IS THE TOP AND CL7223020-U01 IS THE LOUVERS STYLE BARS. YOU SHOULD ALSO HAVE TWO CL7221020-U02 AND TWO CL7221020-U03.
- B** REMOVE THE FACTORY INNER GRILL AND SCREEN, THE SCREEN WILL BE REINSTALLED LATER.
- C** TAKE THE -U06 PART, PEEL THE PVC FILM AWAY FROM THE HOLES AND AWAY FROM THE TOP CENTER AREA.
- D** LOOSEN THE TOP BOLT AND REMOVE THE TWO FRONT LOWER BOLTS OF THE LOGO HOOD PULL. SLIP THE -U06 PART BETWEEN THE LOGO HOOD PULL AND THE FACTORY UPPER GRILL PIECE. REINSTALL THE TWO LOWER BOLTS DO NOT TIGHTEN.
- E** THE -U06 PART LOWER CORNER HOLES MUST LINED UP WITH FACTORY HOLES. DRILL THE LOWER INNER HOLES AT 5/16" DIA. INSERT 1 1/4"LG CARRIAGE BOLTS IN THE JUST DRILLED HOLES AND 3/4"LG AT THE LOWER CORNER HOLES. DO NOT TIGHTEN.
- F** TAKE THE -U05 PART, PEEL THE PVC FILM AWAY FROM THE LEFT AND RIGHT CORNER HOLES. USING 3/4"LG CARRIAGE BOLTS INSTALL AS ILLUSTRATED DO NOT TIGHTEN.
- G** TAKE THE -U04 PARTS AND PEEL THE PVC FILM COMPLETELY, THAN REMOVE THE FLAT WASHER, LOCK WASHER AND HEX NUT OF EACH 3/4"LG CARRIAGE BOLTS CORNER. LINE UP HOLES OF THE -U04 PART WITH HOLES ON TRUCK. INSTALL -U04 PART, FASTEN BACK THE 3/4"LG. USE 1 1/4"LG CARRIAGE BOLTS, FLAT WASHERS, LOCK WASHER, AND HEX. NUTS TO FASTEN THE REST OF THE -U04 PART. DO NOT TIGHTEN. TWO HOLES WILL NOT BE USED.
- H** TAKE THE LOUVER STYLE BARS (-U01), PEEL THE PVC FILM AWAY FROM THE BOLT HOLES. USING 1/2"LG CARRIAGE BOLTS, FLAT WASHERS AND LOCKNUTS, INSTALL ONLY THE TOP AND BOTTOM LOUVER STYLE BARS.
- I** FULLY TIGHTEN ALL THE CARRIAGE BOLTS ON THE GRILL SURROUND PIECES (-U04, -U05,-U06) AND THE LOUVER STYLE BARS.
- J** INSTALL THE TOP AND BOTTOM LOUVERS STYLE BARS, THEN WORK FROM THE TOP DOWN (IT MAY BE NECESSARY TO LOWER THE HOOD TO TIGHTEN THE BOLTS ON THE BOTTOM LOUVERS STYLE BARS).
- K** INSTALL THE REMAINING LOUVER STYLE BARS AND FULLY TIGHTEN ALL BOLTS. (AT THIS POINT, ALL BOLTS ON THE REPLACEMENT GRILL SHOULD BE FULLY TIGHTENED).
- L** LOWER THE HOOD AND PLACE THE SCREEN ON THE BACK SIDE OF THE REPLACEMENT GRILL, THE HOLES IN THE SCREEN SHOULD GO OVER THE RECENTLY INSTALLED BOLTS FROM STEP #5 AND #7.
- M** PEEL THE PVC FILM FROM THE TWO -U02 AND THE TWO -U03. USING THE REMAINING FLAT WASHERS, LOCK WASHERS, AND HEX NUT, TO ATTACH THE TWO -U03 TOP AND BOTTOM GRILL PIECE AND THE TWO -U02 RIGHT AND LEFT GRILL PIECE TO THE NEW 1 1/4"LG BOLTS ALONG THE GRILL SURROUND.
- N** TIGHTEN ALL BOLTS AND PEEL THE REMAINING PVC FILM FROM YOUR GRILL.

**ATTENTION**  
BEFORE BEGINNING THE INSTALLATION OF YOUR NEW GRILL, ENSURE THAT THE KIT YOU HAVE RECEIVED MATCHES YOUR TRUCK MODEL



ITEM NO.	PART NUMBER	DESCRIPTION	QTY
1	CL7223020-U04	GRILL SURROUND DRIVER & PASSENGER SIDE	2
2	CL7223020-U05	GRILL SURROUND BOTTOM	1
3	CL7223020-U03	BACK FRAME TOP & BOTTOM	2
4	CL7223020-U02	BACK FRAME DRIVER & PASSENGER SIDE	2
5	CL7223020-U06	GRILL SURROUND TOP	1
6	CL7223020-U01	LOUVER STYLE BARS	16
7	-	LOCK WASHER 1/4"	24
8	-	FLAT WASHER ID 1/4" X OD 1/2"	64
9	-	HEX NYLOCK NUT #10-32	64
10	-	FLAT WASHER 1/4"	24
11	-	HEX NUT 1/4-20NC	24
12	-	CARRIAGE BOLT 1/4-20 X 1 1/4"LG	10
13	-	CARRIAGE BOLT 1/4-20 X 3/4"LG	4
14	-	CARRIAGE BOLT #10-32 X 1/2"LG	64

**TRUX ACCESSORIES**

TITLE: FRONT GRILL W/16 LOUVER STYLE BARS  
KENWORTH W900

SIZE DWG. NO. **TK-1002**

NAME	DATE	REV	DATE
DRAWN BY P.W.	24-11-2008	PH1	-
SCALE: 1:12		WEIGHT: LBS	SHEET: 1 OF 1